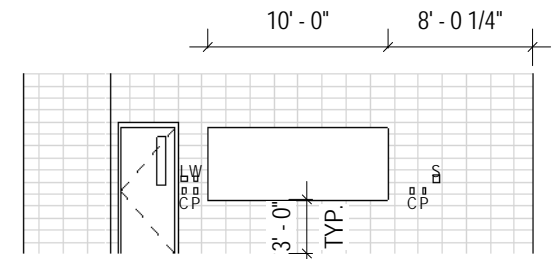
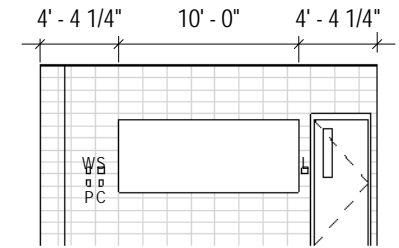


LEGEND:

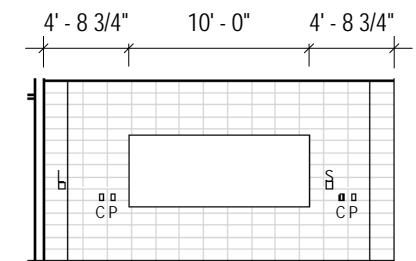
- L = LIGHT SWITCH
- W = WALL PHONE
- C = COMPUTER/DATA
- P = POWER
- S = SCREEN SWITCH



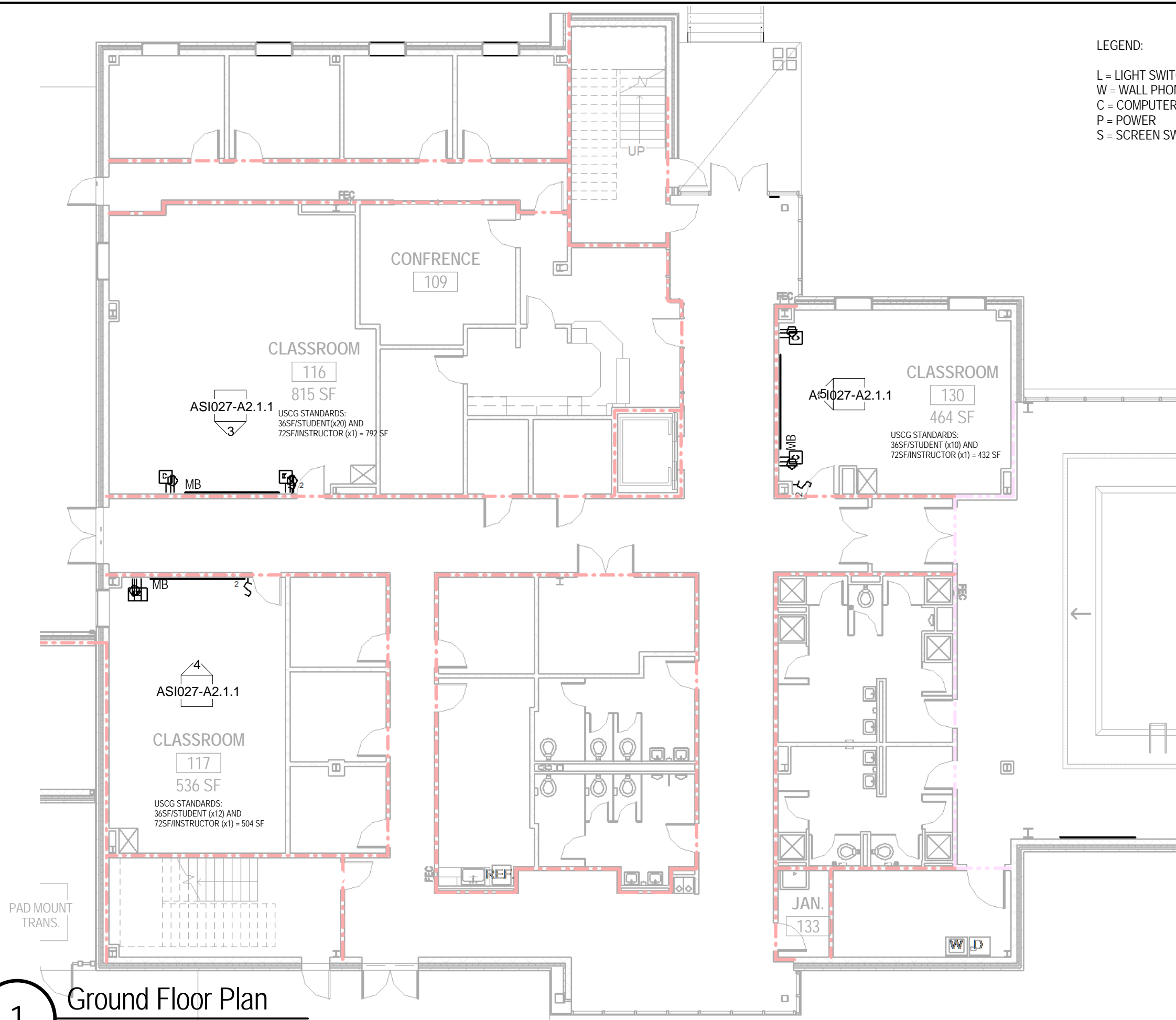
Elevation @ Classroom 116



Elevation @ Classroom 117



Elevation @ Classroom 130



1

Ground Floor Plan

3/32" = 1'-0"

Diesel Marine, Welding and Transportation Building
L.E. Fletcher Technical Community College

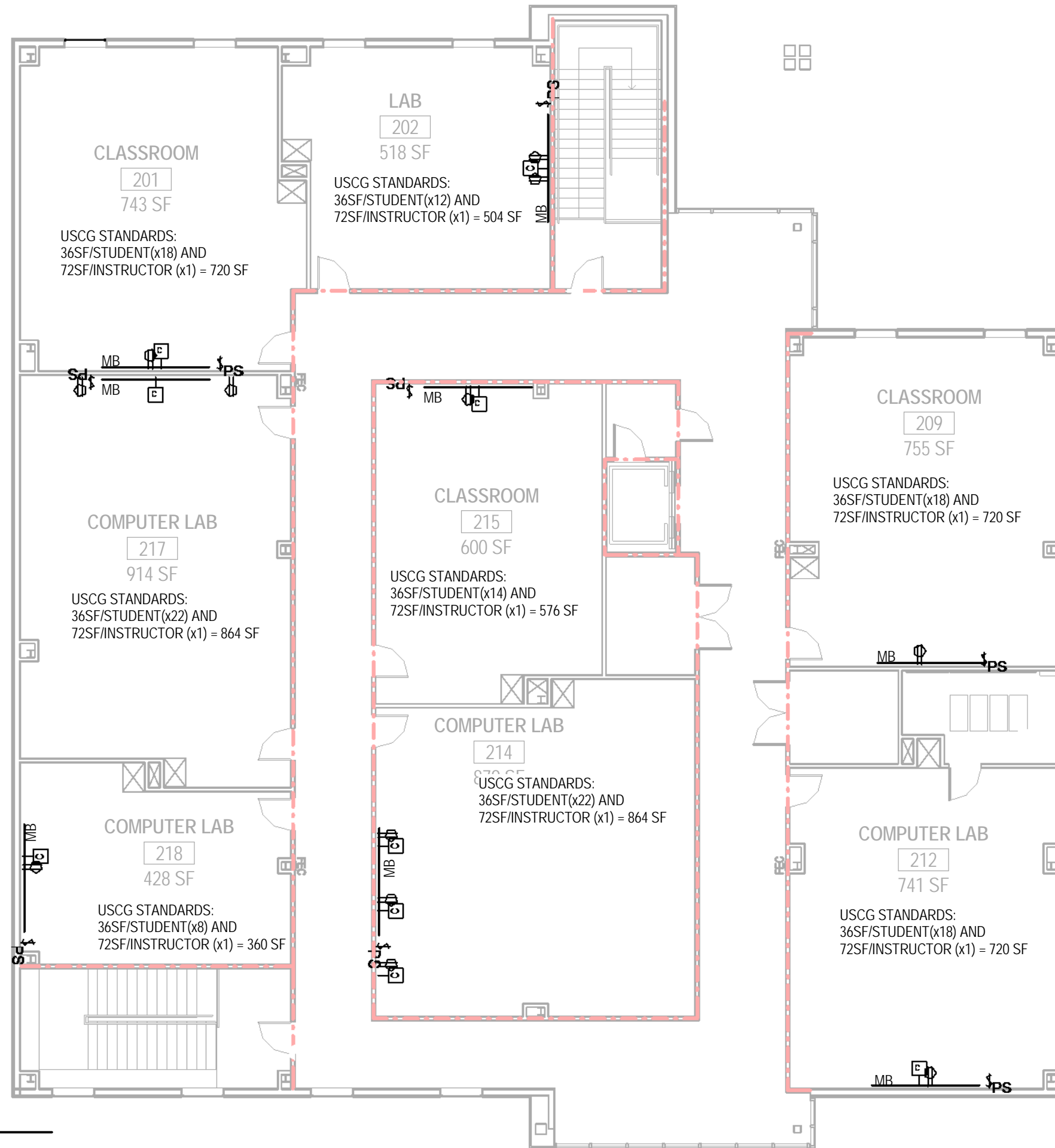
331 Dickson Road, Houma, LA 70363

cheramie+bruce architects
a professional corporation

7905 Main Street
Houma Louisiana, 70360
Ph (985)868-5020 Fax (985)868-5021

DRAWN:	RAJ	CHECKED:	DIMB	DATE:	02/04/14
PROJECT NO:				SHEET NO:	1

Project No: 19-731-07B-01-1
CADD FILE NO: ASI027-A2.1.1
Part 01



1 Second Floor Plan
 3/32" = 1'-0"

Diesel Marine, Welding and Transportation Building
 L.E. Fletcher Technical Community College
 331 Dickson Road, Houma, LA 70363

cheramie+bruce architects
 a professional corporation
 7905 Main Street
 Houma Louisiana, 70360
 Ph (985)868-5020 Fax (985)868-5021

DRAWN: RAJ	CHECKED: DIMB	DATE: 02/04/14
PROJECT NO:	STATE: LA	SHEET NO:
CADD FILE NO: 19-731-07B-01	PROJECT NO: ASI027-A2.2.1	PART 01